



sakwood

# Luxury Tropical Hardwoods

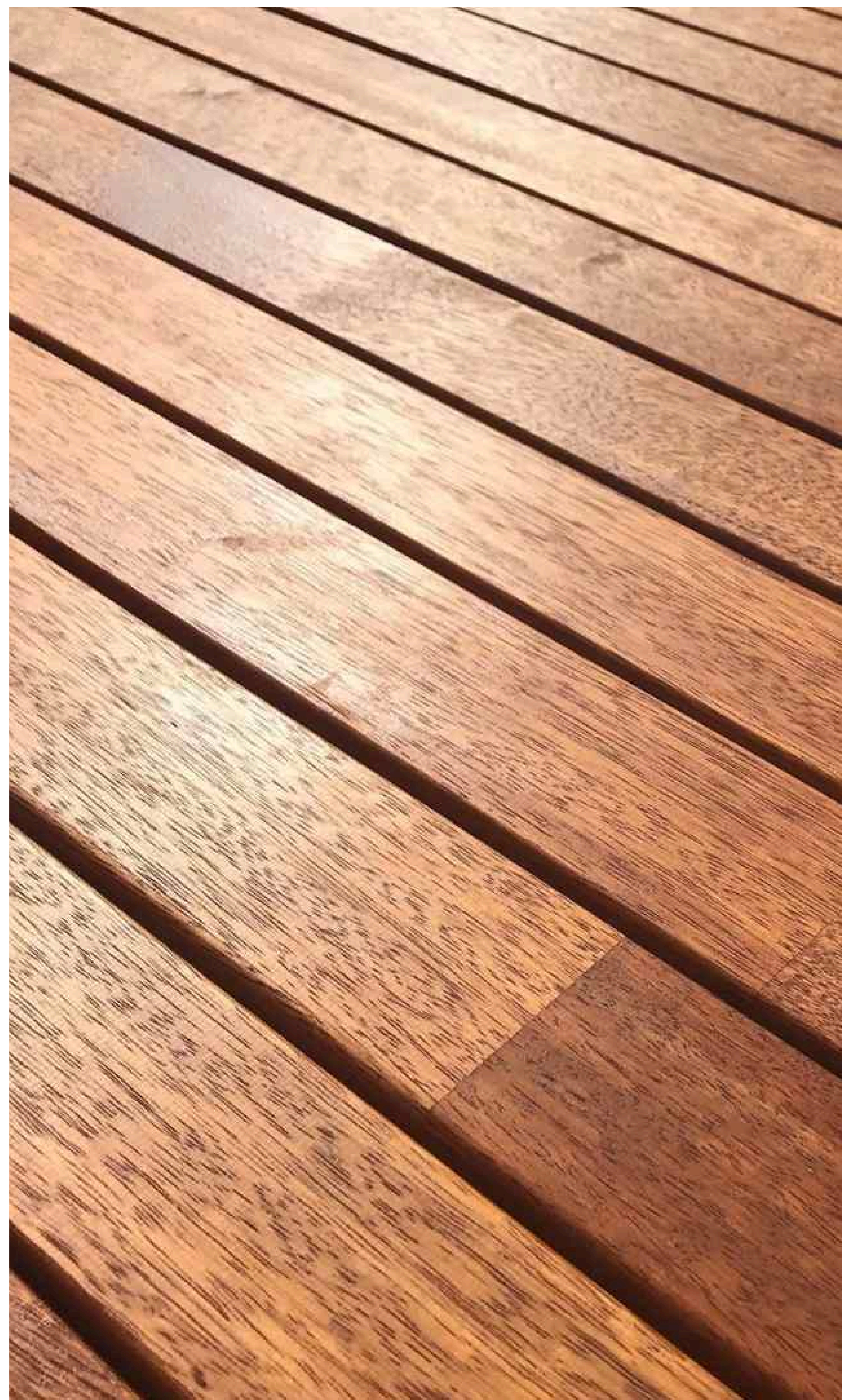
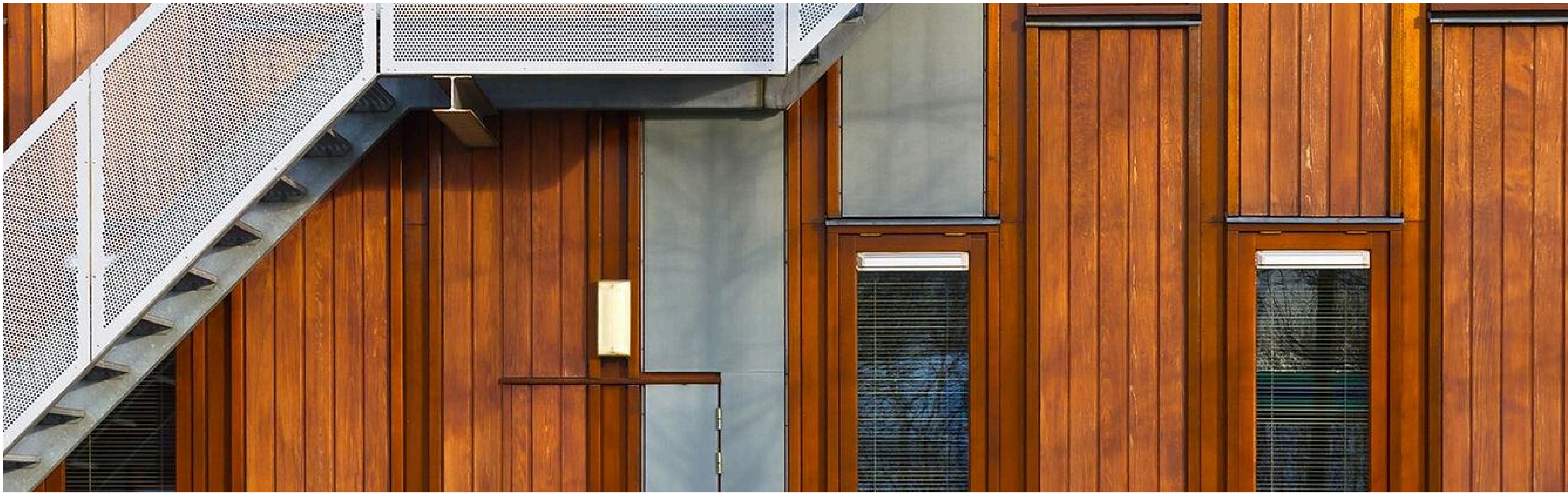
## Product Catalogue

**Your trusted partner** for first class Asian hardwoods.

Specializing in premium Thai Teak & Tropical Hardwoods for extraordinary beauty and champion strength.



# Excellence in Tropical Hardwoods



At SAK Wood, we specialize in sourcing and distributing premium hardwoods. We start with the finest Asian hardwood species. Next, only the best of this wood is selected. Each chosen piece is then expertly crafted to product perfection.

By finish, our materials are exceptional inside and out: boasting unmatched quality and impressively long-term performance.





# Tropical Hardwoods: Strength and Sustainability

**Premium Durability:** The long-term value of tropical hardwoods is found in their powerful resistance to decay, insects, and harsh environmental conditions. The wood's natural strength, density, and rich oils provide robust protection, ensuring your choice is a worthwhile investment that you will cherish for years.

**Aesthetic Appeal:** Beautiful grain patterns and warm, rich tones enhance the visual presence of every project. From the golden colors of Yellow Balau to the deep reds of Merbau, you are sure to enjoy the aesthetics of tropical hardwoods, all of which evoke feelings of distinction and sophistication.

**Versatility:** We believe your materials should be as versatile as your imagination. That's why our hardwoods are the perfect fit for a wide range of projects. Build a deck that stands strong against the seasons, clad your home in a protective layer of natural elegance, or craft a cherished piece of furniture designed to be passed down through generations. With our tropical hardwoods, the only limit is your creativity.

**Sustainability:** Our tropical hardwoods are a smart solution that offers lasting value. Accredited by international certifications, they are guaranteed to be legally and responsibly grown, harvested, and processed, ensuring your project is built with only premium, high-quality materials.



# Contents



Northern Thai Teak	5
• Teak Flooring	7
• Teak Cladding	9
• Teak Sawn Timber	10
• Teak Finger-Joint	11
• Teak Skirting Boards	11
Yellow Balau	12
Merbau	13
Mersawa	14
Keruing	15



# Northern Thai Teak

## Technical Specifications

Species	Thai Teak ( <i>Tectona grandis</i> )
Origin	Northern Thailand
Wood Grade	AB Grade
Drying	Kiln Dried (KD)
Moisture Content	12-14%
Finishing	Unfinished
Tree Size	20–40 m tall
Average Dried Weight	600–700 kg/m <sup>3</sup>
Janka Hardness	~4.0–5.0 kN
Modulus of Rupture	100–120 MPa
Elastic Modulus	10–13 GPa
Crushing Strength	~38–45 MPa
Shrinkage	Radial ~2–3%, Tangential ~4–5%, Volumetric ~6–8%, T/R ≈ 1.8–2.2

- **Premium Quality from Mature Trees:** Our products are crafted from carefully selected logs, 60 to 80 cm in diameter, grown slowly in the ideal climate and fertile soil of Northern Thailand. This causes rich, dense teak wood with golden hues and the distinctive, elegant grain patterns unique to this renowned region.
- **Expert Processing:** Producing premium Thai teak demands expert craftsmanship. Each piece is chosen by grade, kiln-dried, and finished by skilled craftsmen who refine every detail to the highest standards. The result is timber that reflects the wood’s natural beauty and craft expertise that has been honed through generations of mastery.
- **Lifetime Guarantee:** We are so confident in the enduring quality of the wood, proven in architectural heritage sites like the 158 year old Ancient House Chiangmai, that we offer a lifetime guarantee on our flooring products, to grant you peace of mind in the lasting value of your investment.



# Superior Quality from the Northern Highlands

## Key Characteristics and Additional Information

- **Physical Characteristics:**

- **Color and Grain:** The heartwood features distinctive, beautiful golden-brown tones, which gracefully darken with age.

The grain is typically straight but can occasionally be wavy or interlocked, adding to its visual appeal.

- **Texture:** It has a coarse, uneven texture and a velvety touch, which is attributable to the wood's powerful concentration of naturally protective oils.

- **Exceptional Durability:**

- Internationally recognized as the gold standard for decay resistance, teak's heartwood is rated as “very durable.”
- Its unique composition grants an outstanding resistance against termites and fungi.
- **Consideration:** The sapwood is not resistant to the powder-post beetle.

- **Workability and Finishing:**

- Teak's straightforward grain makes it simple to cut and shape with the appropriate tools.
- High silica content (up to 1.4%) has a blunting effect on cutting edges, causing them to dull more quickly. Sharpen tools frequently and use carbide-tipped blades and bits.
- To achieve the best results, pre-drilling is recommended for nails and screws.
- Due to teak’s naturally smooth texture, surfaces can be planed to a glass-like smoothness.

While many finishing products work well, teak's properties make it especially well-suited for penetrating oils.

- **Dimensional Stability:**

- Teak's remarkable dimensional stability makes it an outstanding choice for extreme temperatures and unpredictable weather.
- With a very low shrinkage rate and a T/R ratio of 2.0, teak resists the warping, cracking, and swelling that can occur with harsh weather, from freezing winters to hot summers.



# Flooring Solutions



## Teak Decking: Your Private Sanctuary, Built to Endure

Create an outdoor living space of noteworthy beauty and durability with our **premium teak decking**, engineered to withstand the harshest elements.

- **Unrivaled Weather & Pest Resistance:** Teak possesses a remarkable fortitude against severe weather, including the demanding freeze-thaw cycles of winter. The secret is its high concentration of natural oils and compounds, which actively repel moisture to prevent rot and warping, while also providing scientifically-proven resistance to termites and pests. This ensures your deck remains safe, stable, and beautiful for years to come.
- **Eternal Style & Lasting Charm:** Our teak decking offers versatile long-term aesthetics. It can be easily maintained to preserve its original golden luster, or left to weather naturally, developing a sophisticated silver-grey patina over time that is highly prized for its classic, elegant look.





## Teak Parquet: A Legacy of Unfading Beauty

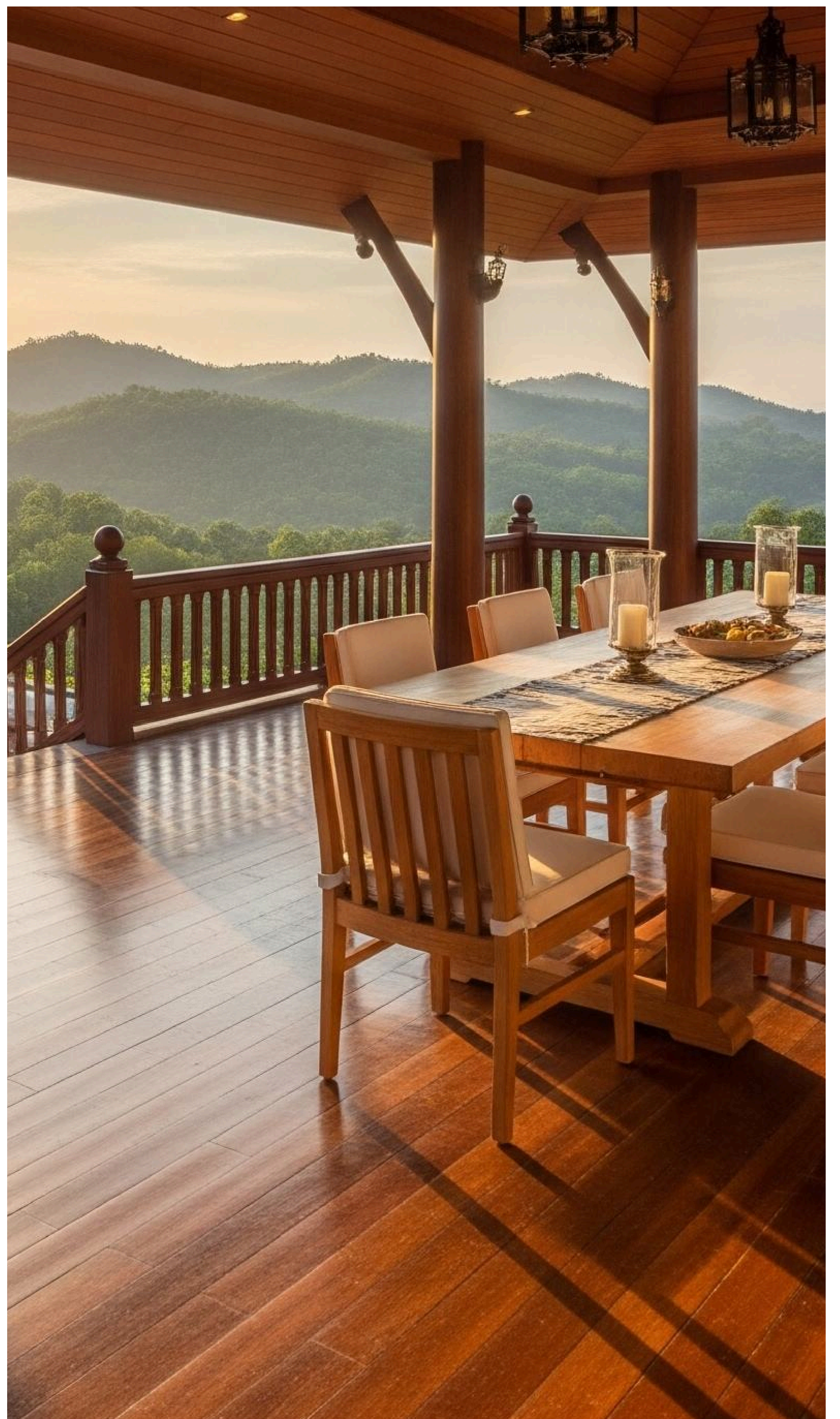
**Teak wood** has proven its rich standing over time, as seen at historic landmarks like the magnificent Mrigadayavan Palace or Wat Phan Tao, which have remained resplendent for over a century. The foundation of your own boundless luxury begins with our teak parquet.

- **Heirloom Quality:** Its supreme value lies in its substantial thickness- a hallmark of heirloom quality. The superior thickness provides an outstanding refinishing lifespan, allowing the surface to be restored countless times to its original splendor. This ensures your solid teak floor can be passed down through generations.
- **Design Freedom:** The four-sided Tongue & Groove (T&G) interlocking system offers complete creative freedom to design complex and unique installation patterns, from herringbone and basketweave to custom motifs. With lengths ranging from 45 to 120 cm, each piece provides added flexibility to perfect your design.

## Teak Floorboards: Classic Prestige, Natural Strength

Create a sophisticated and spacious atmosphere with our premium **teak flooring boards**, the definitive choice for classic interior design.

- **Seamless Installation & Expansive Allure:** Long, beautiful planks create a sense of flow and spaciousness, enhancing a room's dimensions. Engineered with a robust two-sided Tongue & Groove (T&G) system on the long edges, our floorboards ensure a tightly-locking fit and unwavering stability. Planks are available in lengths from 120 cm upwards, with custom options available to achieve the perfect look.
- **Inherent Strength & Protection:** The renowned durability of teak is inherent in its composition. It contains natural oils and compounds scientifically proven to provide powerful resistance against pests and termites, making it one of the world's most resilient hardwoods.







# Wall Panels



## Teak Cladding: The Signature of Architectural Elegance

Elevate your property's exterior from a simple structure to an architectural statement with our premium teak cladding.

- **Architectural Distinction:** The attractive grain and warm, natural tones of our teak cladding impart a distinguished character to homes and businesses. Engineered with a precision shiplap profile, it creates a visually captivating façade which appeals across design styles.
- **The 'Living Shield' for a Healthier Interior:** Beyond its good looks, our solid wood cladding acts as a 'Living Shield.' It naturally helps to regulate humidity, contributing to a healthier and more comfortable indoor environment.

Real teak cladding is an investment in unparalleled distinction, natural functionality, and enduring architectural value.







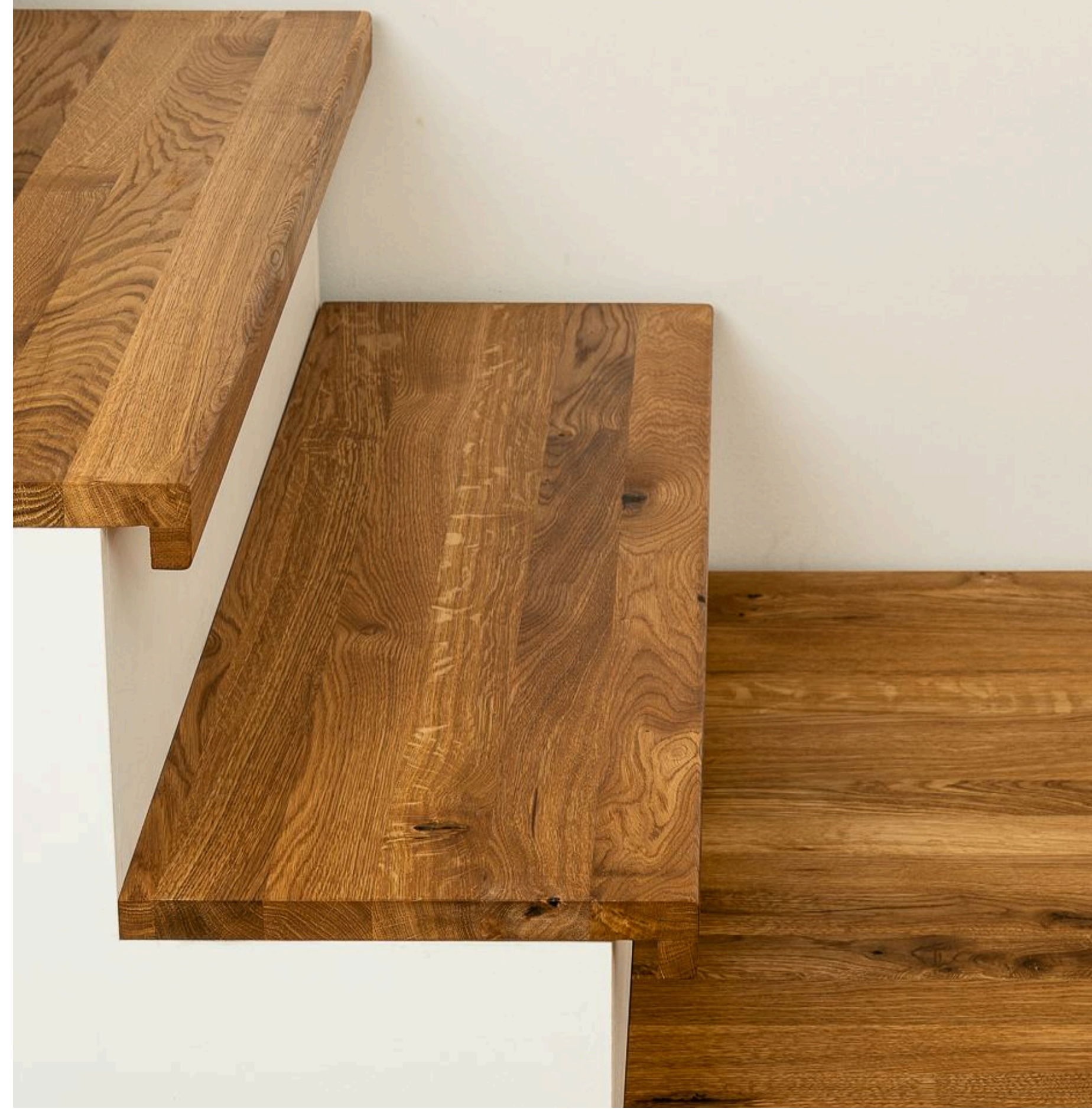
## Premium Sawn Teak: The Foundation of Master Craftsmanship

Our **premium sawn teak timbers** are the ultimate raw material for bespoke creations. Each board is a testament to our cut-for-grade philosophy, showcasing the radiant patterns and exclusive colors of mature Northern Thai Teak. This visual refinement, combined with teak's impressive strength and legendary durability, makes it the definitive choice for custom furniture, structural applications, and architectural built-ins.

- **Kiln-Dried & S4S for Precision Work:** For architects, designers, and craftsmen who demand perfection, we offer our sawn timber Kiln-Dried (KD) to 12-14% moisture content for maximum stability. It is also available Surfaced-on-Four-Sides (S4S), for a smooth and ready-to-use product that provides a superb foundation for projects requiring precision and quality.
- **Length Specifications & Recommendations:**
  - Standard Length (Recommended): 1.5 meters for the optimal balance of quality and stability.
  - Custom Lengths: 2.0 - 2.5 meters are readily available, with a maximum length of 3.0 meters for special orders.
  - Consideration: Planks exceeding 1.5 meters have a higher potential for bending or warping.







## Finger-Joint Products: Strength in Design, Artistry in Detail

A testament to intelligent engineering, our **finger-jointed teak panels** offer enhanced strength, stability, and dimensions unattainable with single boards. By ingeniously joining smaller pieces of solid teak, we create large and reliable panels that beautifully showcase a rich mosaic of natural grain patterns.

### Ideal Applications:

- **Spacious Tabletops & Countertops:** Achieve grand-scale surfaces with unmatched stability, ready for any kitchen or dining environments. (Made-to-order tabletops available up to 4cm thick, 85cm wide, and 2400cm long.)
- **Durable Stair Treads & Risers:** Provides the strength and hardwearing properties required for high-traffic staircases.
- **Continuous Wall & Ceiling Panels:** Create visually stunning, uninterrupted wood surfaces for a modern architectural statement.
- **Custom Furniture & Cabinetry:** The ideal material for high-quality, large-scale custom built-ins and furniture pieces.



## TEAK SKIRTING BOARDS

**Skirting Boards:** Complete your vision with our tasteful and distinguished real teak skirting boards. Water-resistant and durable against impacts, teak skirting boards protect walls from daily wear and tear such as moisture and scuffs. Designed to create a refined transition between floor and wall, they are the essential detail that elevates an interior to its highest aesthetic and function.



# Yellow Balau

- outdoor decking
- exterior wall
- structural beams



## Technical Specifications

Species	Yellow Balau ( <i>Shorea spp.</i> )
Origin	Southeast Asia
Wood Grade	MGR (Malaysian Grading Rules)
Drying	Kiln Dried (KD)
Moisture Content	12-18%
Finishing	Unfinished
Tree Size	40–60 m tall
Average Dried Weight	800–950 kg/m <sup>3</sup>
Janka Hardness	~6.5–8.0 kN
Modulus of Rupture	100–135 MPa
Elastic Modulus	15–18 GPa
Crushing Strength	~65–80 MPa
Shrinkage	Radial ~5–6%, Tangential ~9–11%, Volumetric ~15–17%, T/R ≈ 1.8–2.0

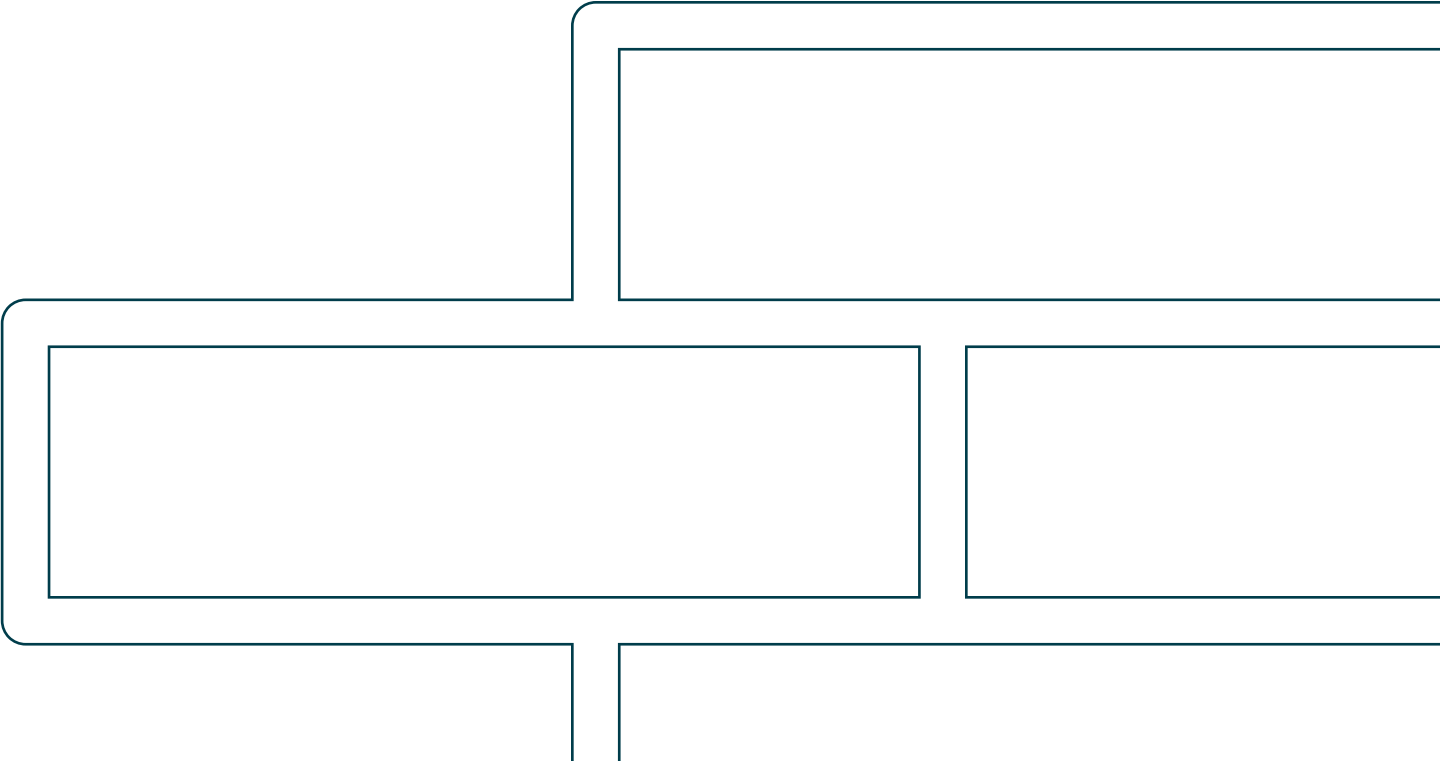
**Key Characteristics:** An exceptionally dense and durable hardwood, Yellow Balau is a premier choice for exterior applications that demand immense strength and a long service life. It excels in weathering and wear resistance, making it ideal for decking and cladding. Furthermore, its structural strength and stability make it a popular choice for construction and high-impact areas.

**Considerations:**

- Due to its high density, it is harder to work with than common woods and requires pre-drilling for screws.
- The wood has a tendency to twist or warp during machining.

**Available Products:**

- Decking
- Cladding
- Sawn Timber





# Merbau

- outdoor spaces
- wall cladding
- flooring



## Technical Specifications

Species	Merbau ( <i>Intsia spp.</i> )
Origin	Southeast Asia
Wood Grade	MGR (Malaysian Grading Rules)
Drying	Kiln Dried (KD)
Moisture Content	10-18%
Finishing	Unfinished
Tree Size	40–60 m tall
Average Dried Weight	750–900 kg/m <sup>3</sup>
Janka Hardness	~7.0–8.5 kN
Modulus of Rupture	130–155 MPa
Elastic Modulus	14–17 GPa
Crushing Strength	~65–80 MPa
Shrinkage	Radial ~2.5–3.5%, Tangential ~4–5.5%, Volumetric ~7–9%, T/R ≈ 1.6–1.8

**Key Characteristics:** Merbau is distinguished by its elegant deep red-brown tones and versatile properties. As a highly durable timber, its natural oils provide excellent resistance to moisture, termites, and fungi. Its high density contributes to its stability, impact resistance, and even sound-insulation and fire-retardant properties, making it suitable for a wide range of applications from decking and cladding to furniture and interior works.

**Considerations:**

- The wood contains yellow mineral deposits that are water-soluble and can cause staining on adjacent surfaces.
- It can have a blunting effect on cutting tools so it is recommended to use carbide-tips as well as pre-drilling.

**Available Products (All Sap-Free):**

- Decking
- Cladding
- Sawn Timber



# Mersawa

- furniture
- paneling
- light construction



## Technical Specifications

Species	Mersawa ( <i>Anisoptera spp.</i> )
Origin	Southeast Asia
Wood Grade	MGR (Malaysian Grading Rules)
Drying	Kiln Dried (KD)
Moisture Content	~10-18%
Finishing	Unfinished
Tree Size	45-60 m tall
Average Dried Weight	550-700 kg/m <sup>3</sup>
Janka Hardness	~3.0-4.5 kN
Modulus of Rupture	70-95 MPa
Elastic Modulus	8-11 GPa
Crushing Strength	~35-50 MPa
Shrinkage	Radial ~4-5%, Tangential ~8-10%, Volumetric ~12-15%, T/R ≈ 2.0-2.2

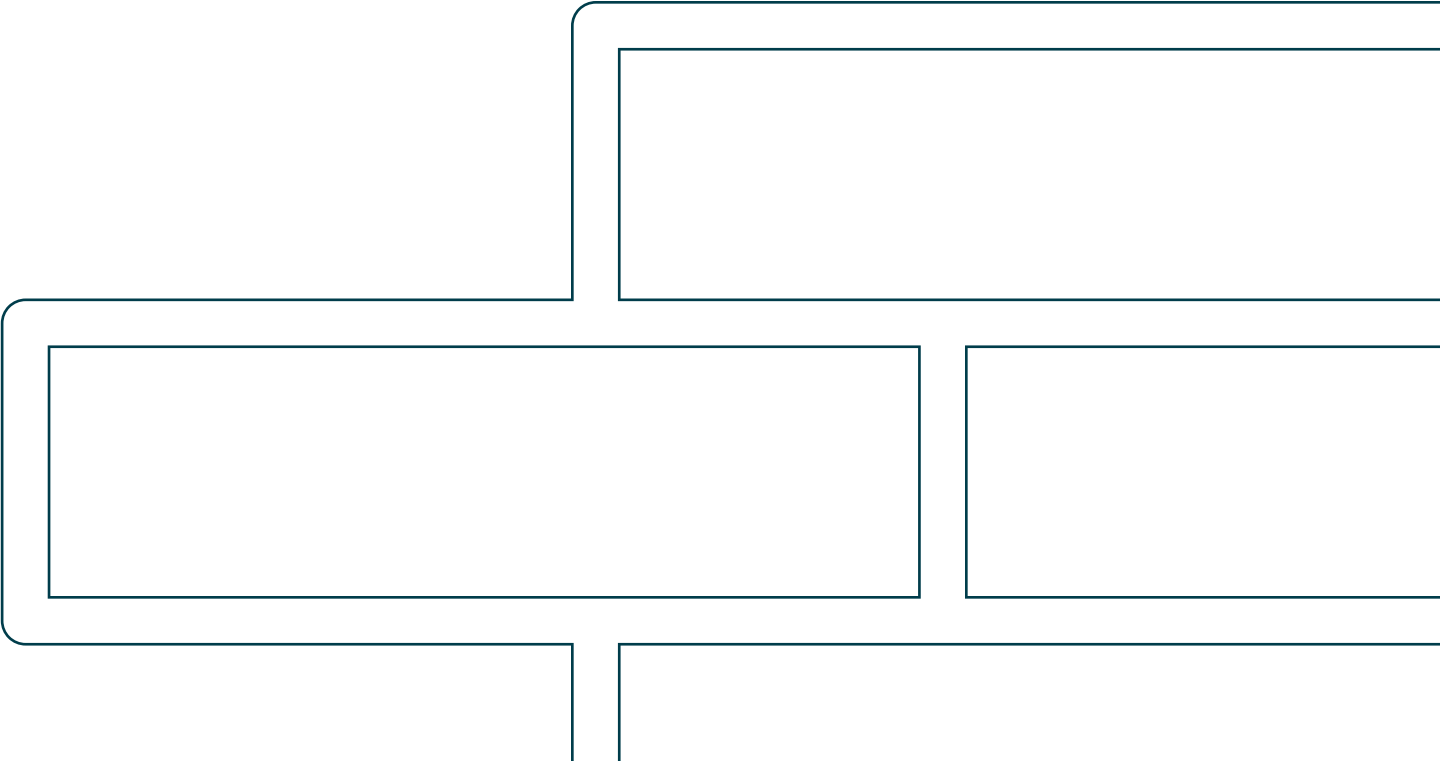
**Key Characteristics:** Mersawa is a lightweight hardwood that combines a pleasing appearance with ease of workability. Mersawa is not only easy to work with, gluing, nailing, and finishing handsomely, but also provides a quality, exotic addition for high-end projects where aesthetic appeal is paramount. It features an attractive grain, and on quarter-sawn surfaces, can display a unique and eye-catching silver-grain figure. It is chosen for interior applications that emphasize beauty, such as high-quality furniture, decorative paneling, and cabinetry.

**Considerations:**

- Primarily recommended for interior use.
- It has low bending and shock resistance, making it suitable for non-load-bearing applications.
- It is a slow-drying timber and may exhibit slight distortion during seasoning.

**Available Products:**

- Sawn Timber for furniture, paneling, and light construction.





# Keruing

- beams
- flooring
- outdoor furniture



## Technical Specifications

Species	Keruing ( <i>Dipterocarpus spp.</i> )
Origin	Southeast Asia
Wood Grade	MGR (Malaysian Grading Rules)
Drying	Air-Dried (AD)
Moisture Content	~15-25%
Finishing	Unfinished
Tree Size	30–60 m tall
Average Dried Weight	700–800 kg/m <sup>3</sup>
Janka Hardness	~5.5–7.0 kN
Modulus of Rupture	100–125 MPa
Elastic Modulus	14–17 GPa
Crushing Strength	~55–70 MPa
Shrinkage	Radial ~5–6%, Tangential ~10–12%, Volumetric ~15-18%, T/R ≈ 1.9-2.1

**Key Characteristics:** Keruing is a durable hardwood with high strength and density, featuring a reddish-brown color and a simple, uniform grain. Resilience to wear and moisture means that keruing is sought-after for heavy-duty applications such as flooring, truck decking, and exterior structural uses.

### Considerations:

- **Key Warning:** The wood has fairly large movement in service (low dimensional stability).
- High silica content contributes to incredible durability while also causing tool blades to dull easily, requiring the use of carbide-tipped tools to maintain a sharp edge.
- Keruing’s natural resins, which provide moisture resistance, can affect finishing but are easily managed by using a pre-finishing solvent wipe.
- It has moderate to poor insect resistance; best suited for interior use or exterior use with appropriate treatment.

### Available Products:

- Sawn Timber for beams, flooring, and outdoor furniture.



# Tropical Hardwoods for the world's finest creations.

Our premium wood materials are meticulously graded and processed to meet the highest standards, combining durability, beloved aesthetics, and sustainability.

Whether for decking, cladding, or sawn timber, tropical hardwoods are an investment to outstand time and the elements, ensuring your projects embody unsurpassed quality and performance, plus a level of visual appeal beyond compare.



+66 95 954 4149



info@sakwood.com



@sakwood



SAK Woods